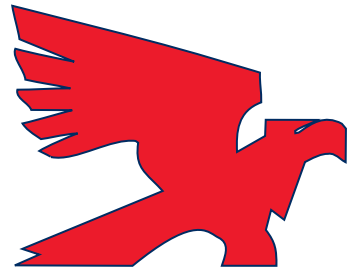


42W Series



**AMERICAN
BALER**
ESTABLISHED 1945



42W Series

42W Series

Baler type: Open-end, auto-tie, single ram, horizontal baler

Safety: Meets all current ANSI 245.51 Safety Standards

Key Features:

Nominal Feed Opening: 50" x 42"; 60" x 42"; 72" x 42"

Nominal Bale Size: 43" x 43" x variable

Main Cylinder: 8", 9" or 10" bore trunnion design

System Pressure: 3000 psi

Main Motor: 20, 30, 50, 75, Twin 20 or Twin 30 HP

Feed Type: Conveyor(s), loader

Bale Tying: Five-wire auto-tie (optional manual tie)

Shear: Available with or without shear blade

Optional: Fluffer

Suitable for baling:

OCC boxes, trim & shreds

Bulky OCC

ONP

MOW

High grade paper

Tin and aluminum cans

Vented PET & HDPE containers

Shredded documents & paper

Printer's waste



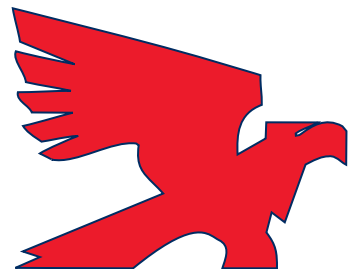
Bellevue, Ohio

800-843-7512

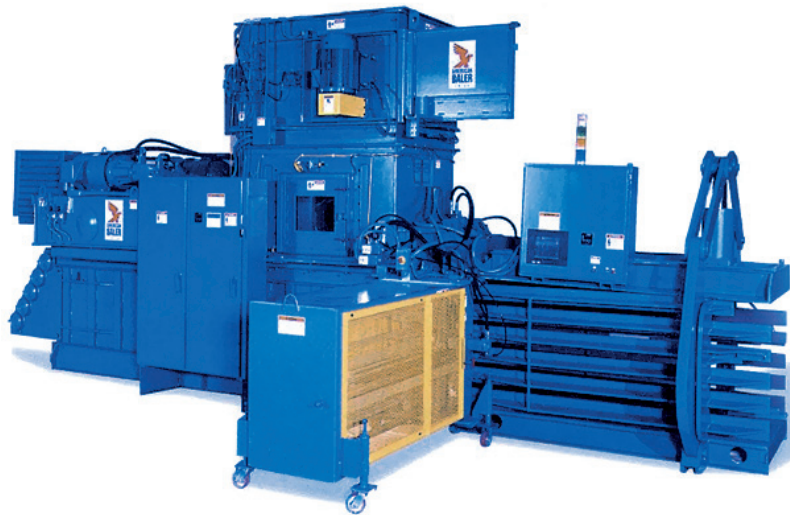
www.americanbaler.com



43HS Series



**AMERICAN
BALER**
ESTABLISHED 1945



43HS Series

43HS Series

Baler type: Open-end, auto-tie, single ram, horizontal shear baler

Safety: Meets all current ANSI 245.51 Safety Standards

Key Features:

Nominal Feed Opening: 54" x 43"; 66" x 43"; 73" x 43"; 80" x 43"

Nominal Bale Size: 43" x 43" x variable

Main Cylinder: 10" bore trunnion design

System Pressure: 3000 psi; 3500 psi (Model 8043HSL-11225)

Main Motor: 50, 75, Twin 20, Twin 30 HP

Feed Type: Conveyor(s)

Bale Tying: Five wire auto-tie with bulk wire feed system

Shear: Serrated shear blade

Optional: Fluffer

Suitable for baling:

OCC boxes, trim & shreds

Bulky OCC

ONP

MOW

High grade paper

Tin and Aluminum cans

Vented PET & HDPE containers

Shredded documents & paper

Printer's waste



Bellevue, Ohio

800-843-7512

www.americanbaler.com

